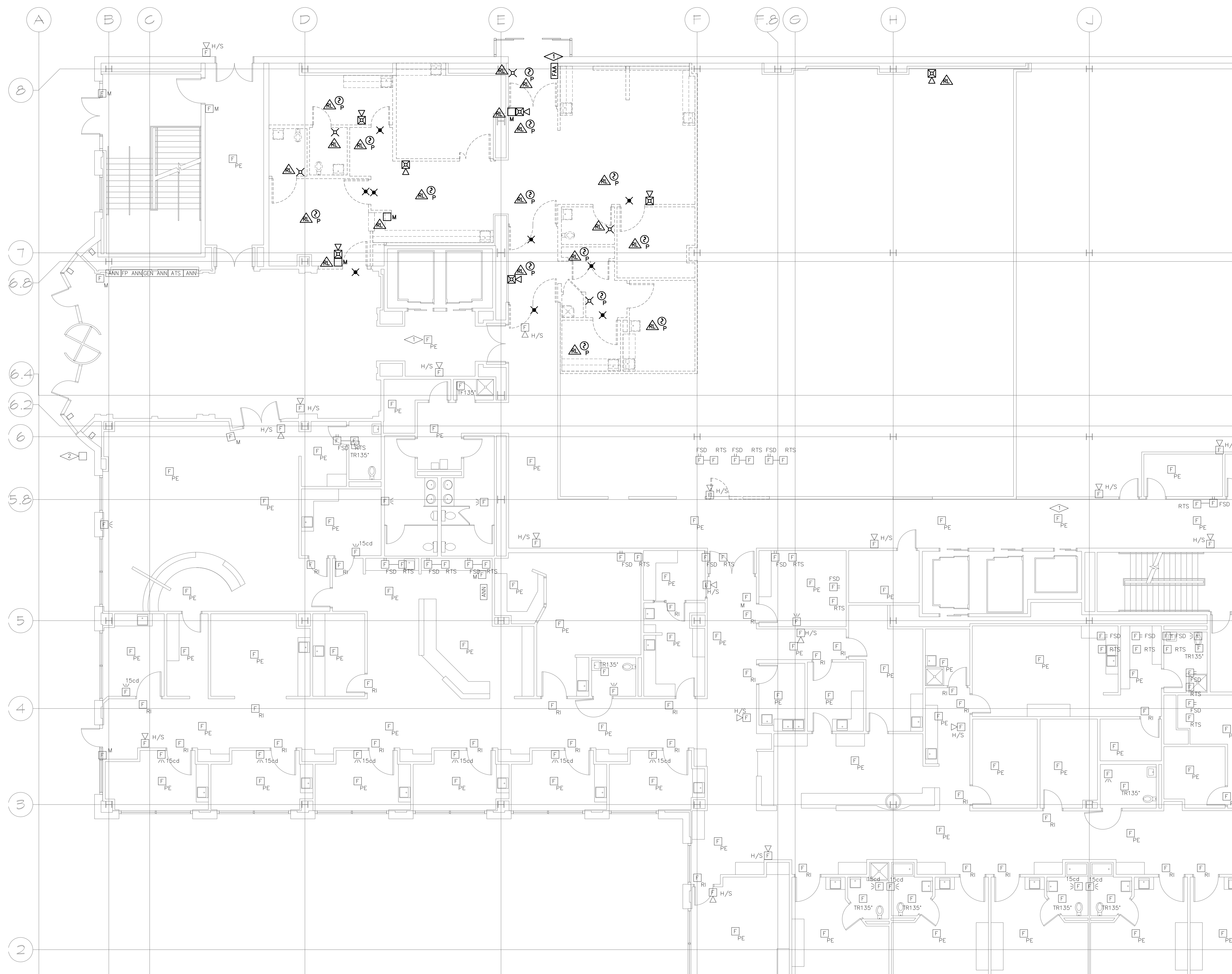


DEMOLITION NOTES:

- UNLESS NOTED OTHERWISE, BOLD ITEMS INDICATE EQUIPMENT, DEVICES, ETC. TO BE REMOVED.
- DEMOLITION DRAWINGS MAY NOT SHOW EVERY ITEM TO BE DEMOLISHED. CONTRACTOR SHALL VISIT SITE TO DETERMINE AND COORDINATE THE EXACT EXTENT OF DEMOLITION TO FACILITATE ALL WORK INDICATED BY THE CONTRACT DOCUMENTS PRIOR TO QUOTATION. NO EXTRAS WILL BE ALLOWED FOR WORK REQUIRED TO ACHIEVE THE END RESULT AS INDICATED BY THE CONTRACT DOCUMENTS. REWORK EXISTING TERMINATIONS, CONNECTIONS, CONDUIT, WIRING, ETC. TO ACCEPT NEW WORK. MAINTAIN CIRCUIT CONTINUITY TO EXISTING CIRCUITS AND DEVICES TO REMAIN OR BE RELOCATED. PRIOR TO COMMENCEMENT OF ANY DEMO WORK, CONFIRM EXISTING CONDITIONS AND NOTIFY ENGINEER OF ANY DISCREPANCIES FOR RESOLUTION.
- ALL ITEMS IDENTIFIED TO BE REMOVED SHALL BE REMOVED IN THEIR ENTIRETY INCLUDING ALL WIRING AND EXPOSED CONDUIT AND CONDUIT SUPPORTS BACK TO POINT OF ORIGIN OR NEXT DEVICE TO REMAIN. REMOVED ITEMS SHALL BE TURNED OVER TO THE OWNER, UNLESS NOTED OTHERWISE, AND STORED IN THE AREA DESIGNATED BY THE OWNER. REMOVE FROM SITE AND LEGALLY DISPOSE OF ALL ITEMS THE OWNER CHOOSES NOT TO ACCEPT.
- WHERE EXISTING CONDUITS ARE SHOWN TO BE REMOVED AND HAVE BEEN ROUTED IN CONCRETE FLOOR SLABS, CONCRETE WALLS OR CONCRETE CEILINGS, THEY SHALL BE CUT BACK FLUSH WITH CONCRETE. FILL WITH GROUT TO ACHIEVE A SMOOTH AND EVEN FINISH FLUSH WITH CONCRETE SURFACE AFTER CONDUCTORS HAVE BEEN REMOVED.
- REUSE EXISTING CONDUIT WHERE CURRENT NEC AND LOCAL CODE REQUIREMENTS ARE MAINTAINED. PROVIDE NEW CONDUIT AND WIRE FOR NEW INSTALLATIONS AND EXTENSIONS OF EXISTING INSTALLATIONS. REUSE EXISTING CONDUIT IN PLACE. DO NOT REINSTALL EXISTING CONDUIT. PROVIDE LABELING PER SPECIFICATIONS FOR REUSED CONDUIT.
- RELOCATED EQUIPMENT AND DEVICES ARE TO BE CLEANED OF ALL FOREIGN MATERIAL. REPLACE EQUIPMENT OR DEVICES WHICH ARE DEFECTIVE OR DAMAGED DURING RELOCATION.
- WHERE EXISTING DEVICES, SWITCHES, MOTOR CONNECTIONS, ETC. ARE TO BE REMOVED FROM WALLS WHICH ARE REMAINING, WALLS SHALL BE PATCHED TO MATCH ORIGINAL FINISH. BLANK COVERPLATES OVER EXISTING BOXES ARE NOT ACCEPTABLE, UNLESS NOTED OTHERWISE.

KEY NOTES:

- DISCONNECT AND REMOVE EXISTING FIRE ALARM ANNUNCIATOR. RETURN TO MOB FACILITIES.



PARTIAL FIRST FLOOR FIRE ALARM DEMOLITION PLAN
SCALE: 1/8"=1'-0"